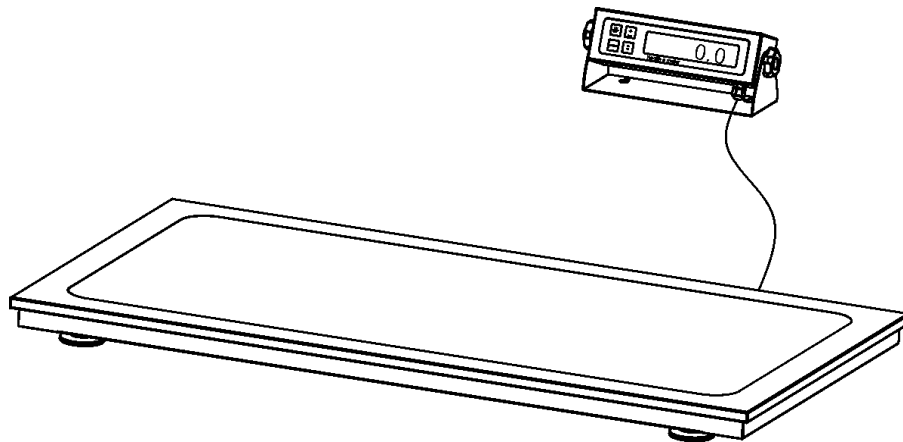


Health o meter®

**LOW PROFILE VETERINARY SCALE
MODEL 2842KL**

**BALANCE VETERINAIRE
MODELE 2842KL**

**BALANZA VETERINARIA
MODELO 2842KL**



OPERATION MANUAL

MODE D'EMPLOI

MANUAL DE OPERACIÓN

LOW PROFILE VETERINARY SCALE MODEL 2842KL

Thank you for your purchase of this product.

Please read this manual carefully and keep it handy for ready reference.

Merci d'avoir acheté ce produit.

Veillez lire attentivement ce manuel et le garder à portée de main pour pouvoir le consulter à tout moment

Gracias por la adquisición de este producto.

Lea por favor este manual cuidadosamente y manténgalo a su alcance para una pronta referencia.

ENGLISH	1
FRANÇAIS	12
ESPAÑOL	23

TABLE OF CONTENTS

CAUTION AND WARNING.....	2
SPECIFICATIONS.....	2
ASSEMBLY INSTRUCTIONS	3
SET UP.....	4
OPERATION INSTRUCTIONS.....	6
MAINTENANCE.....	6
TROUBLESHOOTING.....	7
CALIBRATION PATH	8
EXPLODED VIEW OF SCALE	9
PARTS LIST	10
WARRANTY	11

CAUTION AND WARNING

- To prevent injury, never leave animal unattended while on the scale.
- To prevent injury, do not transport the scale while the animal is in the weighing tray.
- For accurate animal weighing the scale must be placed on a flat, stable surface.
- For accurate weighing, verify proper operation according to the procedure described in this manual before each use.
- Do not use in the presence of flammable materials.
- Operating at other voltages and frequencies than specified could damage the equipment.
- If the “LO BAT” indicator activates, for accurate weighing, replace the batteries or connect the scale to an AC power source as soon as possible.

SPECIFICATIONS

GENERAL

Health o meter’s Low Profile Veterinary Scale model 2842KL uses highly sophisticated microprocessor technology. Each precision instrument is designed to provide accurate, reliable and repeatable weight measurements and features that make the weighing process simple, fast and convenient.

The actual weighing is performed by motion-sensing weighing technology, to determine the weight of an active animal.

The animal’s weight can be displayed in pounds or in kilograms. The scale includes a specially designed removable rubber mat for easy cleaning.

The unit can be operated using its AC power adapter or by 6-C cell batteries.

SCALE SPECIFICATIONS

Capacity and Resolution	600 Lb x 0.2 Lb (270 Kg x 0.1 Kg)
Power Requirements	Adapter 120VAC - 60Hz 6 x C size batteries
Environmental	Operating temperatures: 50°F to 95°F (10°C to 35°C) Storage temperatures: 30°F to 125°F (0°C to 50°C) Humidity: 85%
Physical Dimensions	Length: 42” (106.6 cm) Width: 22 ³ / ₈ ” (56.8 cm) Height: 2” (5 cm) Weight: 45 Lb (20.45 Kg)

ASSEMBLY INSTRUCTIONS

This 2842KL scale has been calibrated at the factory. It is shipped in four assembled parts: the base assembly, the display assembly, the rubber mat and rubber feet. Remove each assembly from its carton and unwrap packing material carefully to prevent scratching the unit's parts.

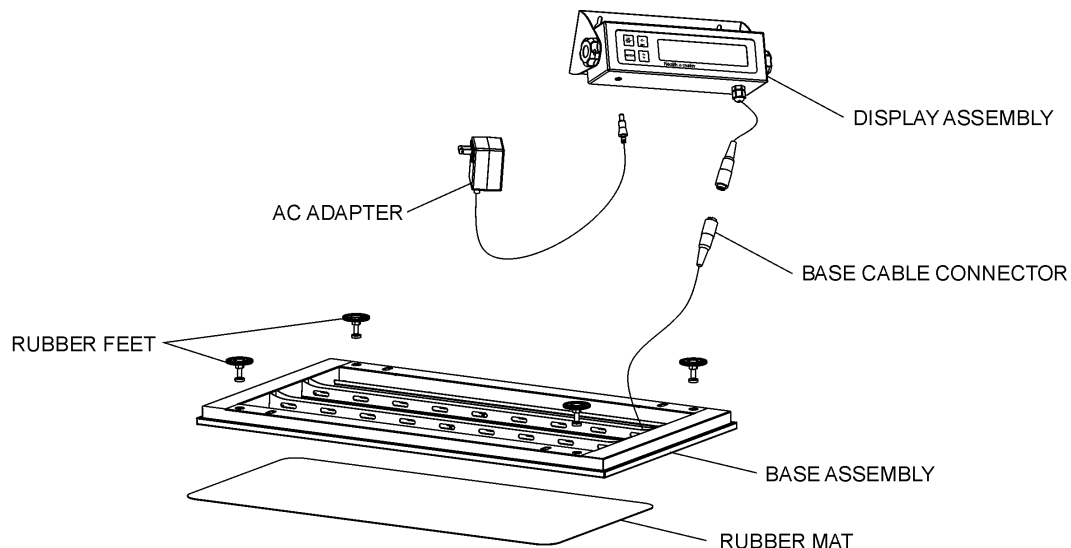


Figure 1. Assembly After Shipment

1. Place the base assembly upside down on a steady surface.
2. Screw the four feet onto the base assembly as shown.
3. Turn the base assembly right side up.
4. Plug the display cable connector into the base cable connector.
5. Place the display assembly on the table or mount it on the wall, as desired. For mounting the display assembly on the wall use 5/16" or 8mm drill bit.
6. Place the rubber mat on the base assembly, inside the designated frame.

The scale may be operated by an AC power source adapter or by 6-C cell batteries. The scale will automatically switch to battery operation when an AC power source is absent.

SET UP

1. Place batteries in the battery holder (see “Replacing Batteries” below).
2. Plug the scale’s AC adapter into the display assembly and into the power source.
3. Press the ON/OFF button to turn the scale on. The display will show “start” and then “0.0”.
4. When the self-test function is complete:
 - The digital display should read “0.0”.
 - “LB” should be indicated on the right side of the display. (To change the default units of the scale to kilograms (Kg), please contact our Technical Support Center at 1.800.638.3722 or 1.708.598.9100).
5. Place a weight [not to exceed 600 Lb (270 Kg)] on the scale. The digital display will blink “-----” until the weight calculation is complete.
6. Press the LBS/KG button to select the weight mode, either in kilograms or pounds.
7. Press the REWEIGH button; the digital display should read again the weight of the item on the scale.
8. Remove the weight from the scale. The digital display should continue to read the weight of the item that was on the scale.
9. Press the ZERO button; the digital display should return to zero.
10. Disconnect the power source connector from the scale, then turn the scale on using ON/OFF button. The scale should automatically switch to battery power.

NOTE:

If the set up procedure failed, go to the troubleshooting instructions. If the problem is not corrected, refer to qualified service personnel.

Replacing Batteries

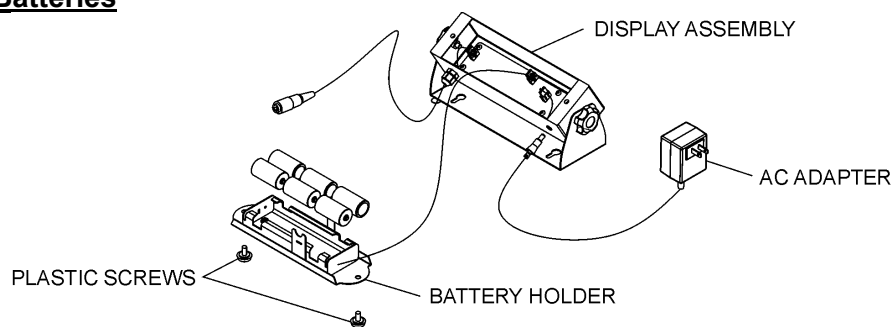


Figure 2. Replacing Batteries

1. Disconnect the scale from the AC power source.
2. Unscrew two plastic screws and carefully remove the battery holder from the display assembly.
3. Release attachable strap from the batteries. Replace the batteries with new ones and reattach the strap.
4. Position the battery holder into the display assembly and reinstall two plastic screws.

SET UP

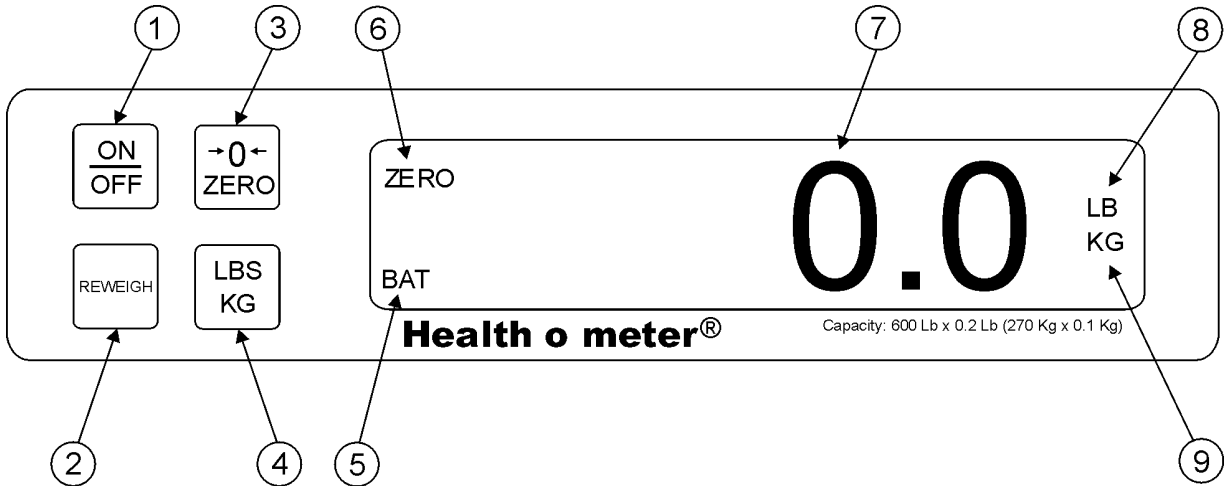


Figure 3. Control Panel

ITEM	DESCRIPTION	FUNCTION
1	ON/OFF button	Turns scale ON and OFF.
2	REWEIGH button	Allows repeated reweighing of animal.
3	ZERO button	Zeros Digital Display prior to weighing. Enables the cancellation (tare) of weight of mat or other accessories on the scale.
4	LBS/KG button	Selects kilograms or pounds.
5	BAT indicator	When ON, indicates scale batteries are low. The batteries should be replaced.
6	ZERO indicator	When ON, indicates the scale is stable and ready for use.
7	Digital Display 6 Digit LCD	Displays animal weight in kilograms or pounds as shown by the "LB" or "KG" indicator on the right side of the display. When REWEIGH button is depressed, display will blink "-----" until animal's weight is determined.
8	LB indicator	When ON, indicates displaying weight in pounds.
9	KG indicator	When ON, indicates displaying weight in kilograms.

OPERATION INSTRUCTIONS

1. Press the ON/OFF button to turn the scale on.
2. Wait until "0.0" appears on the digital display.
3. If you choose to use a mat, blanket or other accessory on top of the built-in rubber, make sure that the edges of the accessory are on the scale and are not touching the surface on which the scale is positioned. Press the ZERO button to cancel the weight of the accessory that is on the scale.
4. Place an animal on the scale. The display will blink "=====" until the weight of the animal is determined.
5. If you wish to reweigh without to remove and to place an animal on the scale again, press the REWEIGH button.
6. Remove the animal from the scale. The digital display should continue to read the animal's weight until REWEIGH or ZERO button is pressed.

NOTE: After 2 minutes of inactivity, the scale will turn itself off to conserve power. To restart the scale press the ON/OFF button.

MAINTENANCE

GENERAL

This section provides instructions for maintenance, cleaning, troubleshooting and operator replaceable parts for the Low Profile Veterinary Scale model 2842KL. Maintenance operations other than those described in this section should be performed by qualified service personnel.

MAINTENANCE

Before first use and after periods of non-use, check the scale for proper operation and function. If the scale does not operate correctly, refer to qualified service personnel.

1. Check overall appearance of the total scale for any obvious damage, wear and tear.
2. Inspect AC adapter for cord cracking or fraying or for broken or bent prongs.

CLEANING

Proper care and cleaning is essential to ensure a long life of accurate and effective operation.

Disconnect the scale from the AC power source.

1. Clean all external surfaces with a clean damp cloth or tissue. Mild soap and water solution may be used. Dry with a clean soft cloth.
2. Do not immerse the scale base or display assembly into cleaning or other liquid solution.
3. Do not use Isopropyl Alcohol or other solutions to clean the display surface.

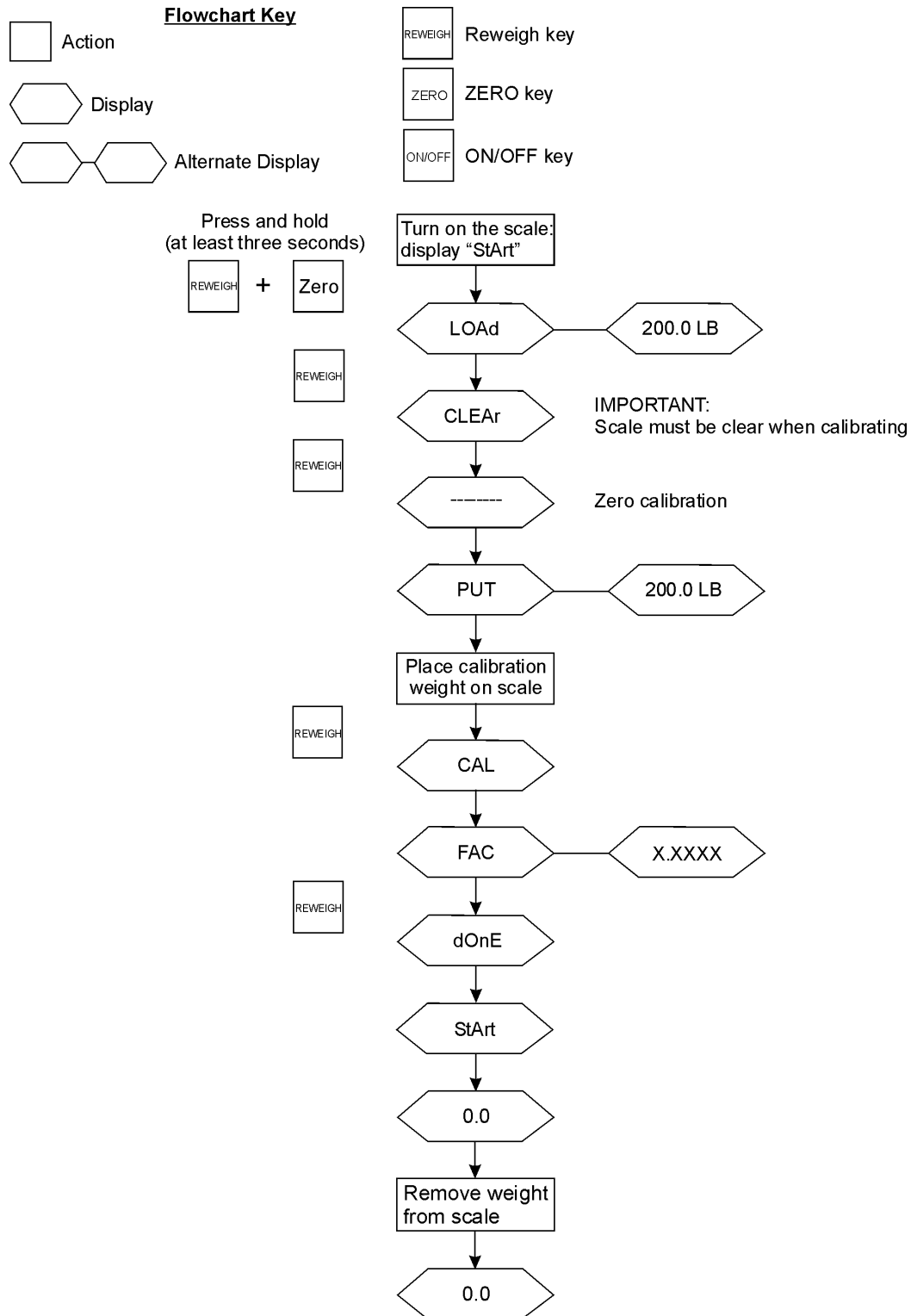
TROUBLESHOOTING

Refer to the following instructions to check and correct any failure before contacting service personnel.

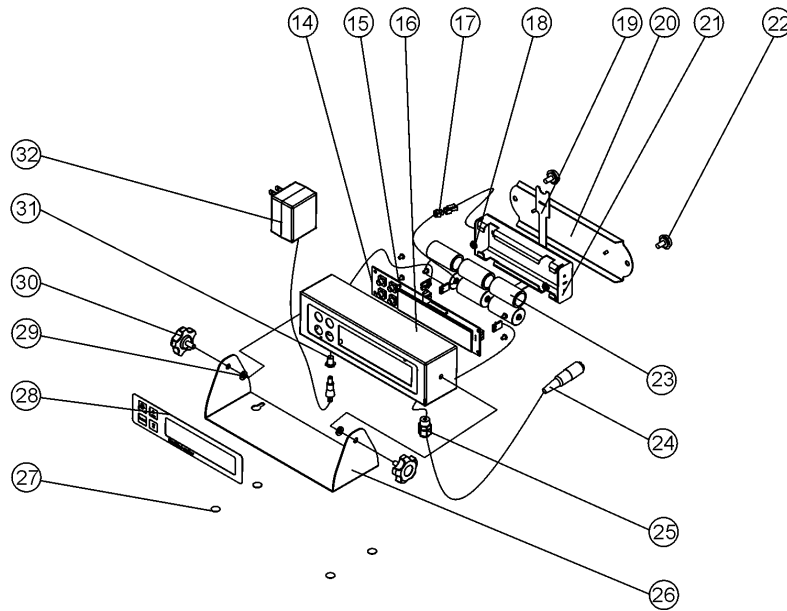
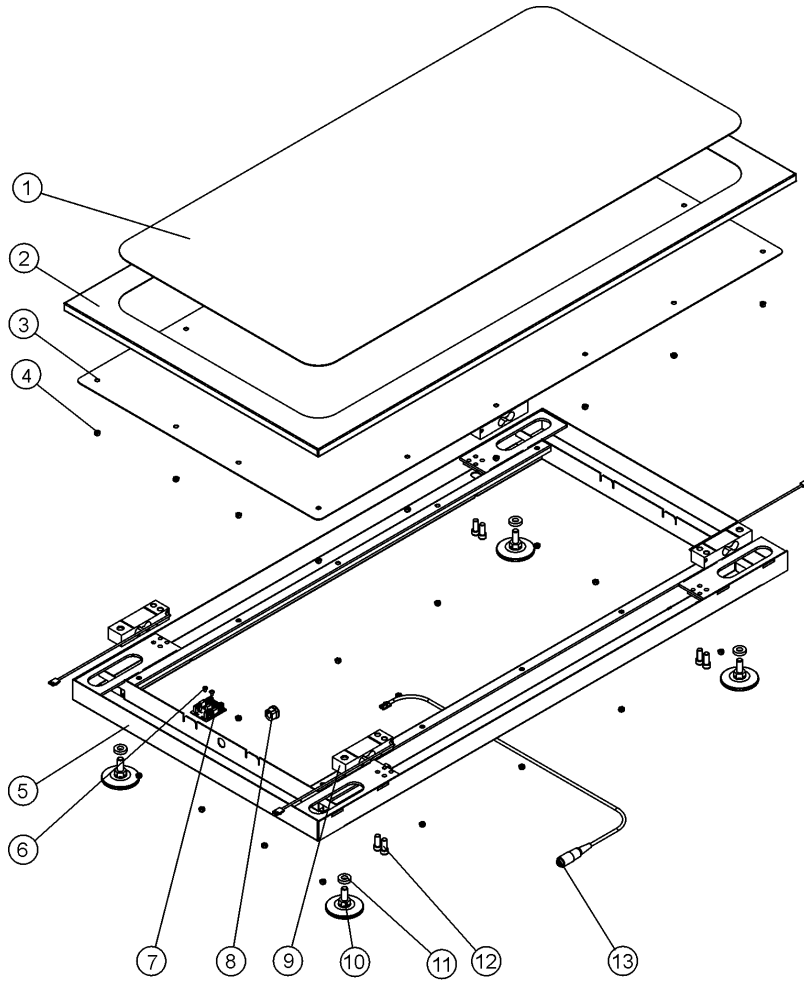
SYMPTOM	POSSIBLE CAUSE	CORRECTIVE ACTION
Scale does not turn on	<ol style="list-style-type: none"> 1. Dead Battery 2. Faulty electrical outlet 3. Bad power supply 	<ol style="list-style-type: none"> 1. Replace batteries 2. Use a different outlet 3. Replace adapter
Questionable weight or the scale does not zero	<ol style="list-style-type: none"> 1. External object interfering with the scale 2. The display did not show "0.0" before weighing 3. Scale is not placed on a stable surface 4. Scale is out of calibration 	<ol style="list-style-type: none"> 1. Remove interfering object from the scale 2. Remove animal, zero the scale and begin weighing process again 3. Place the scale on a stable surface and begin weighing process again 4. Check weight with known weight value
The display shows "OL"	The load on the scale exceeds the capacity	Remove the excess weight and use the scale according to its limits
The display shows "UL"	The scale is in under-load condition	Make sure the rubber mat is placed on the base
The display shows "LO BAT"	The batteries are low	Replace batteries according to instructions

CALIBRATION PATH

The modes are accessible by holding certain keys pressed after power-up. The keys must be pressed and held for at least three seconds.



EXPLODED VIEW OF SCALE



PARTS LIST

Key No.	Part No.	Description	Qty.
1	3811201-0	RUBBER MAT	1
2	3811101-0	PLATFORM	1
3	3810601-0	COVER PLANE	1
4		SELF LOCK NUT M5	32
5	3811001-0	SCALE BASE ASSY.	1
6		PHIL.PAN HEAD SCREW NC6*1/4"	2
7	2138302-0	JUNCTION BOX	5
8	400142	STRAIN RELIEF	1
9	1304201-0	LOAD CELL	4
10	3810001-0	RUBBER FOOT NC3/8"	4
11		RUBBER WASHER	4
12		HEX. SOCKET SCREW NC5/16*3/4"	8
13	2005502-0	JUN. BOX - MAIN BOARD CABLE	1
14	2138803-0	FALCON BOARD	1
15		PHIL. PAN HEAD SCREW NC6*1/4"	6
16	3812901-0	EL. BOX	1
17		NUT WITH LOCK WASHER NC6	2
18	2033301-0	MAIN BOARD - CONN. TWO PIN CABLE	1
19	401124	BATTERY HOLDER STRAP	1
20	3812601-0	REAR COVER	1
21	2032801-0	BATTERY HOLDER	1
22		PLASTIC HEAD SCREW M6*12	2
23		C CELL BATTERIES	6
24	2032701-0	MAIN BOARD TO LOAD CELL CABLE	1
25	400525	CABLE HOLDER - P.G.7	1
26	3813001-0	DISPLAY HOLDER	1
27		ROUND PLASTIC LEG	4
28	3513201-0	FACE PLATE-PELSTAR 2842	1
29		PLASTIC WASHER M6	2
30		ROSETTE HEAD SCREW M6*13.5	2
31	2033001-0	ADAPTER - MAIN BOARD CABLE	1
32	420964	ADAPTER 120VAC 9VDC	1

WARRANTY

LIMITED WARRANTY

What does the Warranty Cover?

Pelstar LLC scales are warranted from date of purchase against defects of materials or in workmanship for a period of one (1) year. If product fails to function properly, return the product, freight prepaid and properly packed to Pelstar. See "To Get Warranty Service" below for instructions. If manufacturer determines that a defect of material or in workmanship exists, customers' sole remedy will be repair or replacement of scale at no charge. Replacement will be made with a new or remanufactured product or component. If the product is no longer available, replacement may be made with a similar product of equal or greater value. All parts including repaired and replaced parts are covered only for the original warranty period.

Who is Covered?

The original purchaser of the product must have proof of purchase to receive warranty service. Pelstar dealers or retail stores selling Pelstar products do not have the right to alter, or modify or any way change the terms and conditions of this warranty.

What is Excluded?

Your warranty does not cover normal wear of parts or damage resulting from any of the following: negligent use or misuse of the product, use on improper voltage or current, use contrary to the operating instruction, abuse including tampering, damage in transit, or unauthorized repair or alternations. Further, the warranty does not cover Acts of God, such as fire, flood, hurricanes and tornadoes. This warranty gives you specific legal rights, and you may also have other rights that vary from country to country, state to state, province to province or jurisdiction to jurisdiction.

To get Warranty Service

Make sure you keep your sales receipt or document showing proof of purchase.

Call 1 (800) 815-6615 or 1 (708) 598-9100 to receive a return authorization number. Attach proof of purchase to your defective product along with your name, address, daytime telephone number and description of the problem. Carefully package the product and send with shipping and insurance prepaid to:

Pelstar LLC

Attention R/A# _____

Repair Department

7400 W. 100th Place

Bridgeview, IL 60455

If your scale is not covered by warranty, or has been damaged, an estimate of repair costs or replacement costs will be provided to you for approval prior to servicing or replacing.

Pelstar LLC

7400 West 100th Place, Bridgeview IL 60455 • 1-800-815-6615 or 1-708-598-9100

www.healthometermedical.com

Health o meter® is a registered trademark of Sunbeam Products Inc., Boca Raton, FL 33431