



Service Manual
6875/6875KGEU
Euro Chair Scale



0065-M482-01 Rev A
09/04

CARDINAL SCALE MFG. CO.
PO BOX 151 WEBB CITY, MO 64870
PH (417) 673-4631 - FAX (417) 673-5001
Web Site - <http://www.detectoscale.com>

Printed in USA

Cardinal / DETECTO
TEST PROCEDURE FOR 6875 / 6875KGEU

No. 0065-A413-PT

Rev. B

Date 12/11/02

App By D. WINKFIELD

Page 1 of 3

PRODUCTION TEST PROCEDURE

FOR 6875 / 6875KGEU

- A. EQUIPMENT REQUIRED
- B. SETUP
- C. CALIBRATION
- D. FINAL TEST



Cardinal / DETECTO
TEST PROCEDURE FOR 6875 / 6875KGEU

No. 0065-A413-PT	Rev. B	Date 12/11/02	App By D. WINKFIELD	Page 2 of 3
------------------	--------	---------------	---------------------	-------------

A. Equipment Required

- Scale under test
- Standard Hand tools
- Test Weights: Appropriate certified weights to accomplish the linearity tests

B. Setup

1. Assemble scale. Remove the indicator left end cap to expose the Cal. switch.
2. Plug unit into power.

C. Calibration

1. While holding the Calibration switch in, press the **ON/OFF** key.
2. The display will show **int=** . The indicator is now ready for calibration.
3. During setup and calibration, pressing the **ENTER** key will cause the data displayed, to be retained and the indicator will advance to the next prompt. Change the value by entering the new data by the numeric keypad then press the **ENTER** key.
4. Follow prompts (see calibration table)

758C CALIBRATION TABLE		
MODELS	6875	6875KGEU
int=	2	1
Unlt=	3	2
dPP=	1	1
CAP	400	200
CAL=	1	1
LOAD=	APPLY FULL (SCALE) CAPACITY	
UnLOd=	REMOVE TEST WEIGHTS	
trA=	2	
trL=	0	
UnS=	3	
Flt=	1	
Sr=	2	
HOLd=	1	
tyPE=	0	
btn=	0	
FEEt=	1	0
niCAD	0	
PUO=	0	
ASH=	9	
SLP=	2	
donE		

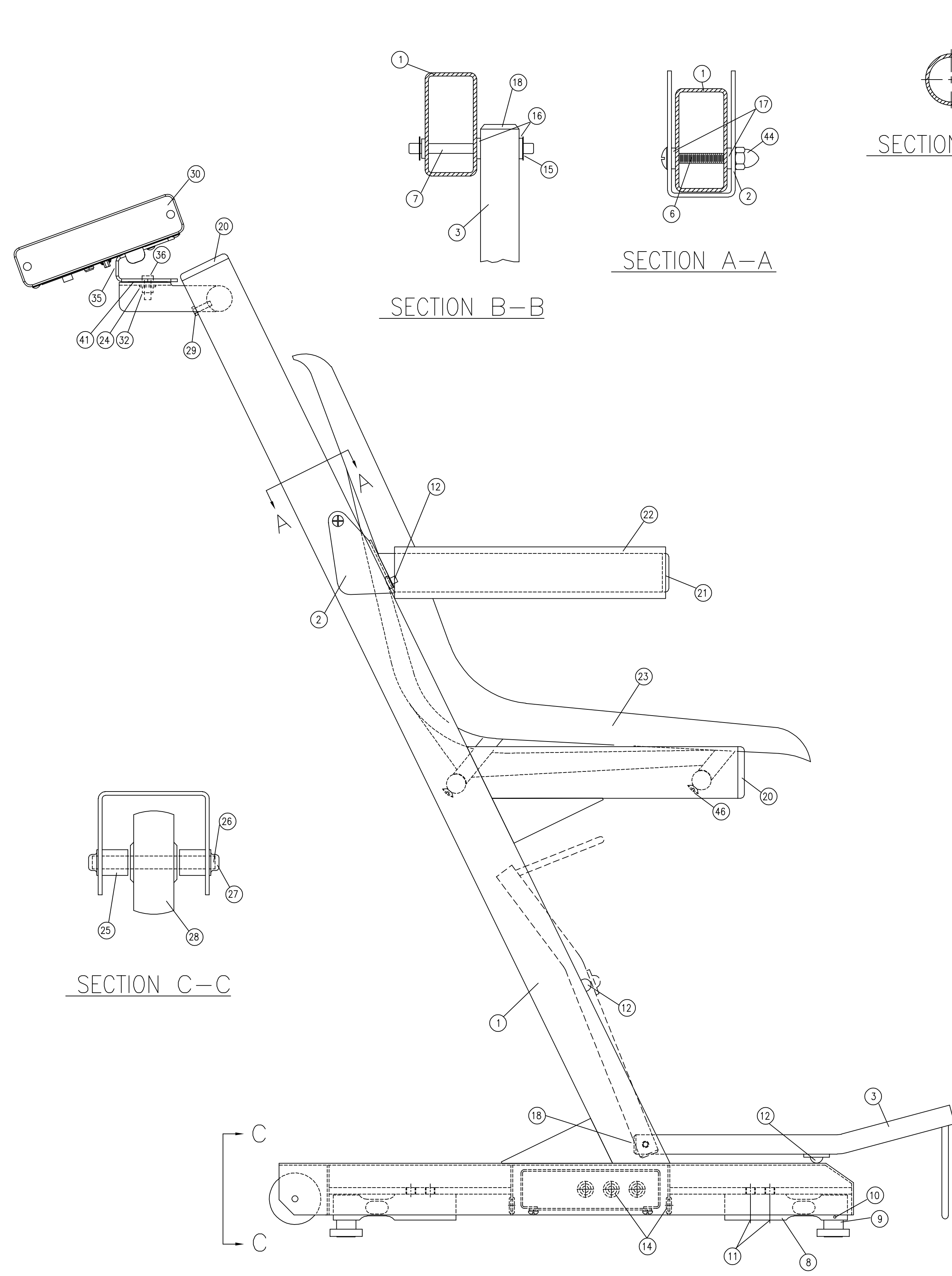
Cardinal / DETECTO
TEST PROCEDURE FOR 6875 / 6875KGEU

No. 0065-A413-PT	Rev. B	Date 12/11/02	App By D. WINKFIELD	Page 3 of 3
------------------	--------	---------------	---------------------	-------------

D. Final Test

1. Perform Linearity test. Check both ascending and descending. See table.
3. Install indicator cover.
4. Fill out "PRIDE" Form.
5. Send Unit to Packing

Linearity Check Table							
6875				6875KGEU			
Applied Weight	Tolerance			Applied Weight	Tolerance		
0	0	To	0	0	0	To	0
25 lb	25.0 lb	To	25.0 lb	15 kg	15.0 kg	To	15.0 kg
50 lb	50.0 lb -	To	50.0 lb +	25 kg	25.0 kg	To	25.0 kg
100 lb	100.0 lb -	To	100.0 lb +	50 kg	50.0 kg -	To	50.0 kg +
200 lb	199.8 lb	To	200.2 lb	100 kg	99.9 kg	To	100.1 kg
300 lb	299.8 lb -	To	300.2 lb +	150 kg	149.9 kg -	To	150.1 kg +
400 lb	399.6 lb	To	400.4 lb	200 kg	199.8 kg	To	200.2 kg



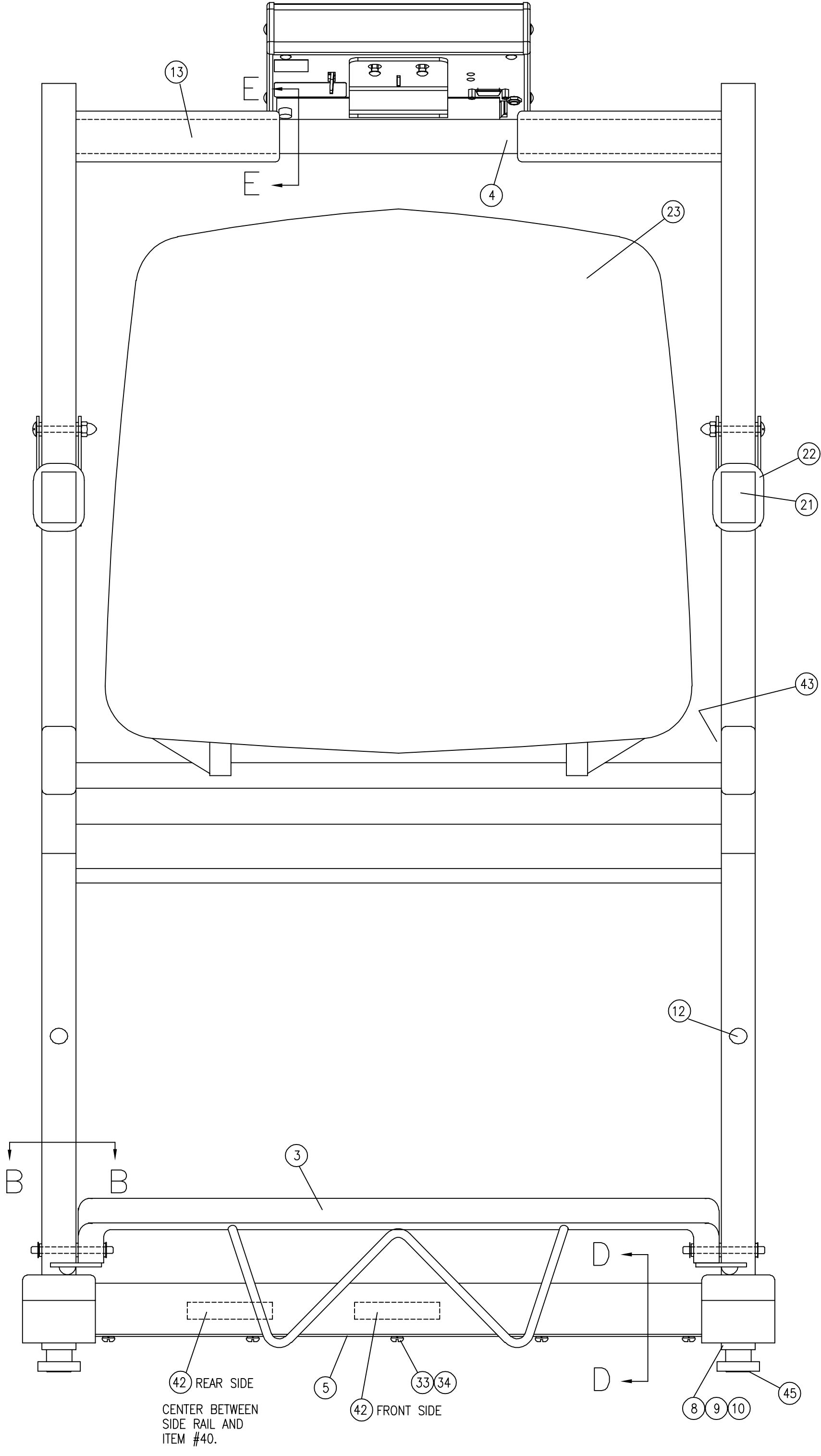
SECTION E-E

SECTION A-A

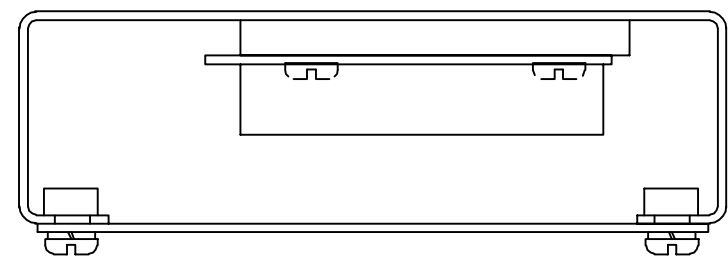
SECTION B-B

SECTION C-C

SECTION D-D




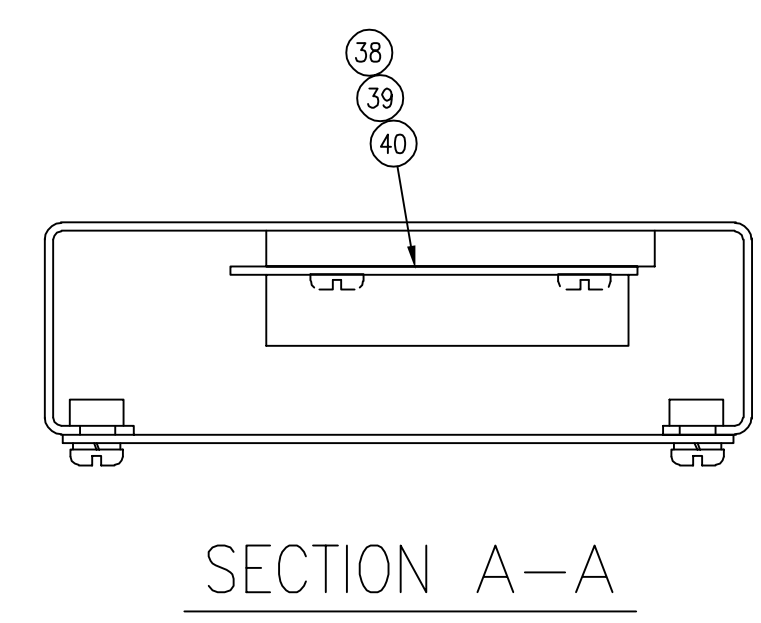
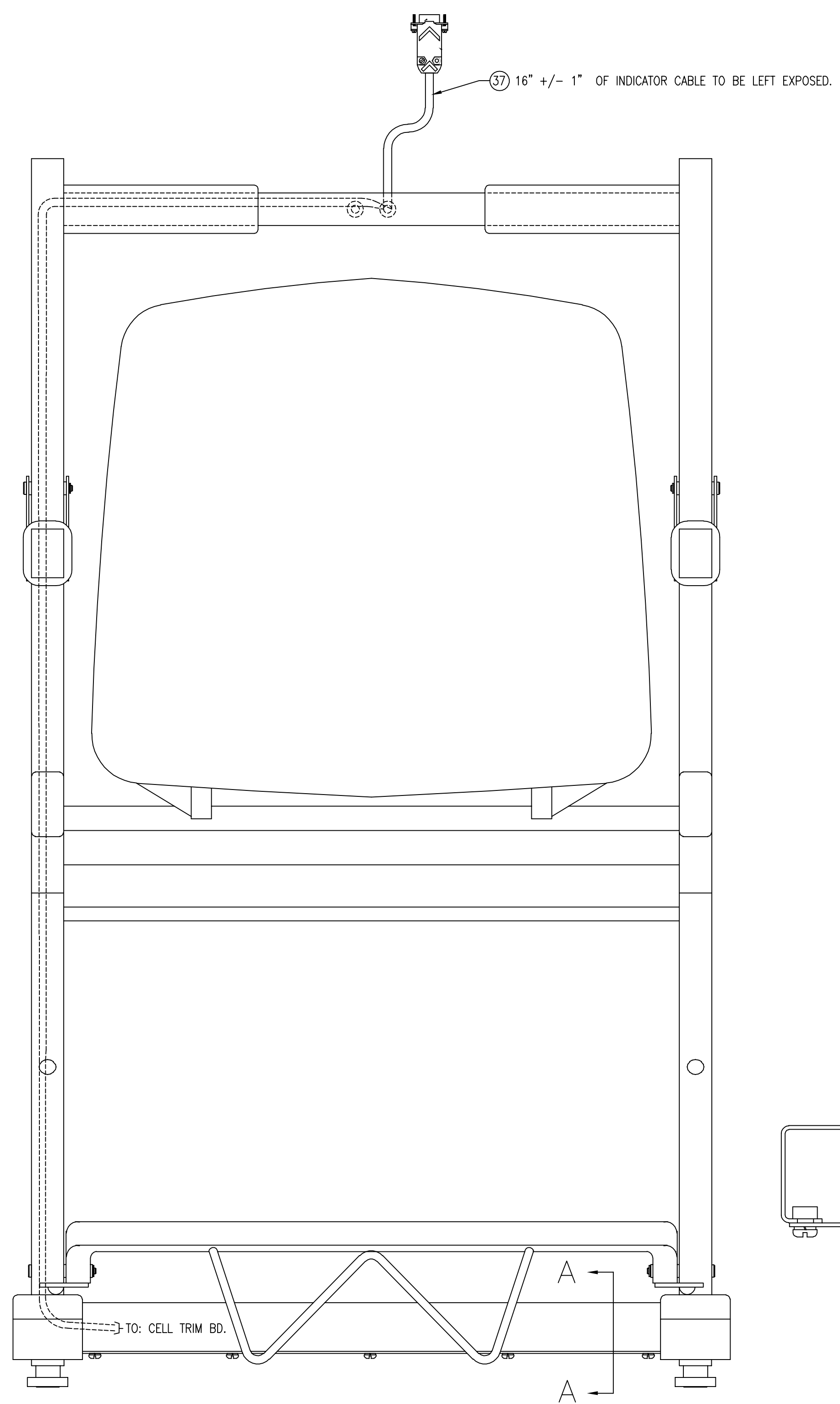
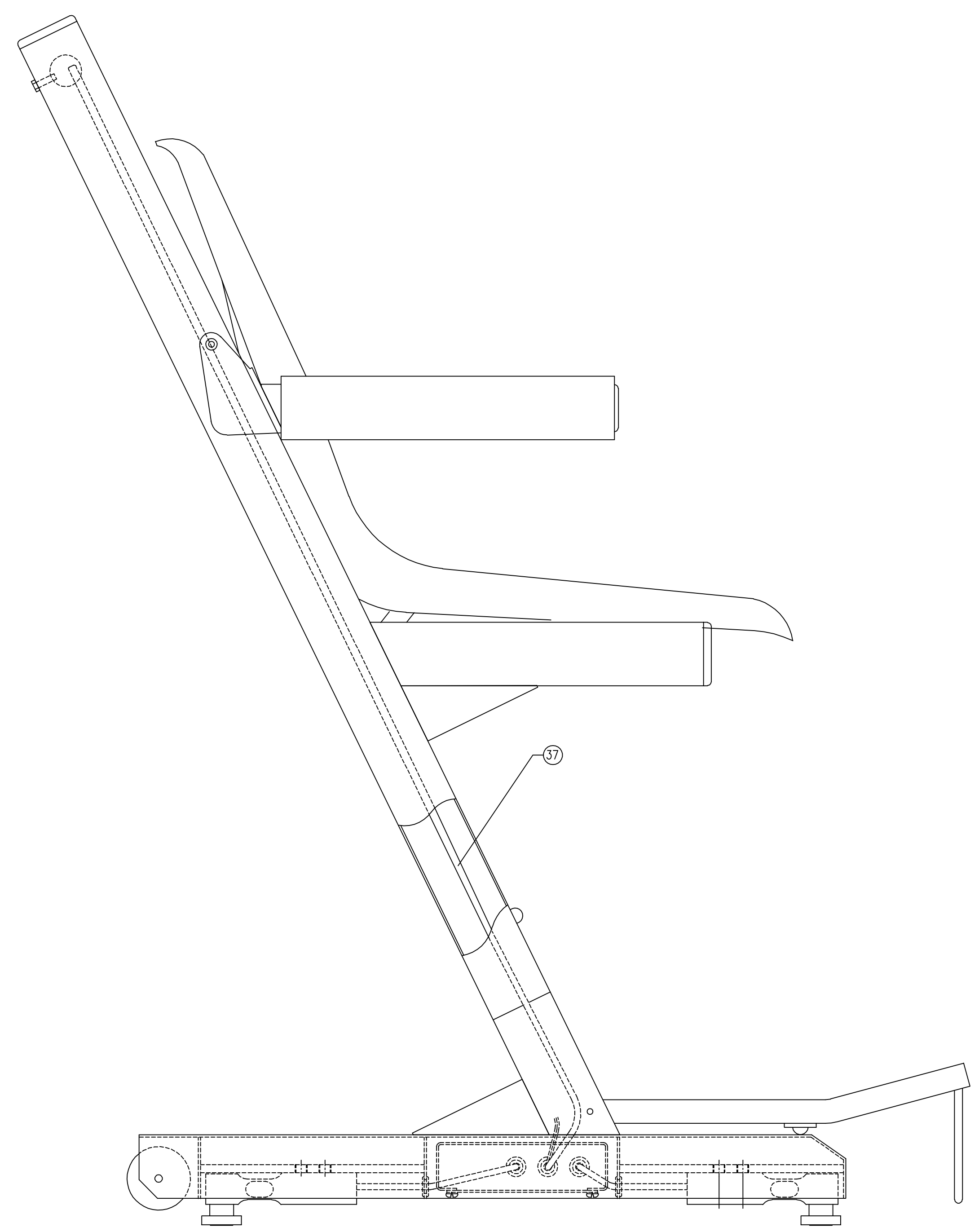
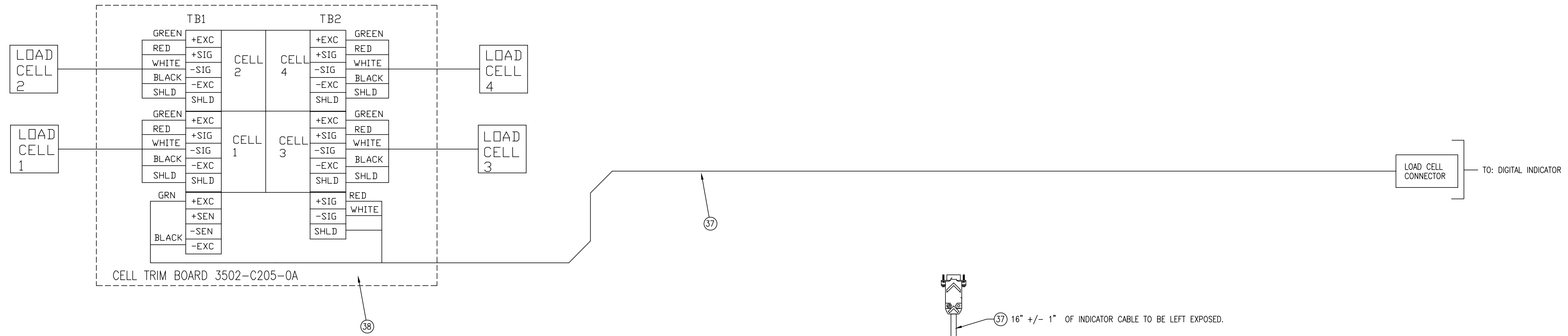
42 REAR SIDE CENTER BETWEEN SIDE RAIL AND ITEM #40.
42 FRONT SIDE



FOR WIRING DIAGRAM SEE SHEET 2.

QTY.	QTY.	QTY.	ITEM	PART/DWG.	DESCRIPTION	MATERIAL OR SOURCE	WT. EACH
		-0A	ASSY	NUMBER			
4	46			6021-1101	SCW OVAL HEAD	#12 x 1 1/2" PHIL DRV Z/P	
4	45			6540-1122	RUBBER FOOT	.81 DIA.	
2	44			6013-0433	10-32 ACORN NUT	THREADLOCK HEX, 18-B S.S.	
1	43			593CR986	SERIAL TAG		
2	42			593R985	DETECTO LOGO		
1	41			0033-B110-08	UHMW DISK		
1	40			6680-0003	WASHER FLAT #6	NYLON	-
2	39			6021-0661	SCW PAN-HEAD	#6-32 X 0.25	-
1	38			3502-C205-0A	4 CELL TRIM BOARD	.	0.05
1	37			0065-B403-0A	INDICATOR CABLE	.	0.05
1	36			6021-1454	HEX HEAD BOLT	1/4 - 20 UNC-2A X 3/4"	0.06
1	35			0033-B164-0A	MOUNTING BRACKET	758C	-
10	34			6024-0033	LOCK WASHER	#10	-
10	33			6021-1023	PAN HEAD MACHINE SCREW	#10-32 X .375	-
1	32			391RV204	ELASTIC STOP NUT	1/4"	
1	31			758C	INDICATOR	758C	
2	29			6021-0981	HEX HEAD SELF TAP	#10 X .75 Z-PLATED TYPE-B	0.01
2	28			6540-1105	WHEEL	2" DIA.	0.14
4	27			399R40	PUSH CAP		0.01
2	26			0065-B234-08	WHEEL AXLE		0.03
4	25			6680-1079	NYLON SPACER	1/2 O.D. X .257 I.D. X 1/2 LONG	0.01
1	24			6024-0004	FLAT WASHER S.S.	1/4"	
1	23			6540-1103	CHAIR SHELL		3.5
2	22			6540-0030	GRIP, FOAM		0.25
2	21			6540-1099	CAP PLUG	1 X 1 1/2	0.05
4	20			6540-1098	CAP PLUG	1 X 2	0.05
1	19						-
2	18			0065-B241-08	GLIDE	3/4 X 3/4	0.03
4	17			6024-1045	FLAT WASHER	TEFLON, .193 ID x .626 OD x .062 THK.	-
4	16			6024-1069	SHOULDER WASHER	NYLON	-
4	15			6013-0428	PUSH NUTS	3/16 DIA.	-
12	14			6680-1043	GROMMETS		-
1	13			6540-1070	FOAM GRIP	CUT INTO (2) PIECES.	0.20
6	12			6540-1094	BUMPER		-
8	11			6021-2063	SOCKET HEAD CAP SCREW	3/8"-24 UNF-2A X 1"	0.05
8	10			6020-0012	ROLL PIN	1/8" DIA. X 1/2" LONG S.S.	-
4	9			0065-B108-08	ALFB FOOT		0.10
4	8			LFB-250M	LOAD CELL ASSEMBLY		0.47
2	7			0065-B231-08	FOOT PIVOT PIN		0.01
2	6			6021-1263	10-32 TRUSS HEAD MACHINE SCREW	10-32 x 1 1/2 PHILLIPS DRIVE	
1	5			0065-B205-08	J-BOX COVER		1.43
1	4			0065-C232-0A	CROSS TUBE ASSEMBLY		1.13
1	3			0065-D203-0A	FOOT REST ASSEMBLY		2.45
2	2			0065-C202-0A	ARM REST WELDMENT		1.05
1	1			0065-D201-0A	FRAME WELDMENT		30.45

QTY.	QTY.	QTY.	ITEM	PART/DWG.	DESCRIPTION	MATERIAL OR SOURCE	WT. EACH
		-0A	ASSY	NUMBER			
PARTS/MATERIAL LIST							
 Cardinal <small>Cardinal Scale Manufacturing Co.</small> <small>WENOM CITY, MISSOURI, U.S.A. 64472</small>							
TITLE FINAL ASSEMBLY							
SCALE 3/8"=1"		DO NOT SCALE DRAWING		NEXT ASSEMBLY			
DR. K.A.	DATE 12-12-91						
CH. JRD	DATE 4-27-92						
MODEL 6875	SHEET 1 OF 2	DWG. NO. 0065-D200-0A		REV. Y			



QTY.	QTY.	QTY.	ITEM	PART/DWG. NUMBER	DESCRIPTION	MATERIAL OR SOURCE	WT. EACH
			ASSY				
PARTS/MATERIAL LIST							
UNLESS OTHERWISE SPECIFIED TOLERANCE ON DIMENSIONS ARE: ANGLES ± 1/2° INTEGERS/FRACTIONS ± 1/16 IN. DECIMALS (.X) ± .03 IN. DECIMALS (.XX) ± .01 IN. DECIMALS (.XXX) ± .005 IN. NOTE: WHOLE NUMBERS MUST BE WRITTEN XX.000 TO INVOKE DECIMAL TOLERANCES.							
			Cardinal Cardinal Scale Manufacturing Co. WEIR, OTCY, MISSOURI, U.S.A. 64702 CARDINAL DETECTO FULLER WEIGHING SYSTEMS				
TITLE: FINAL ASSEMBLY							
DR. SC		DATE 3-31-92		SCALE 3/8"=1"		DO NOT SCALE DRAWING	
CH. JRD		DATE 4-2-92		NEXT ASSEMBLY			
MODEL 6875		SHEET 2 OF 2		DWG. NO. 0065-D200-0A		REV. Y	

